



شركة إنهاء البلاد للمقاولات INMAA ALBILAD CONTRACTING CO.





إنماء البلاد
INMAA ALBILAD

Who We Are?

Inmaa Al Bilad Company for Contracting is a multi-disciplinary Contracting company. Since its establishment in 2002, Inmaa Al Bilad Company for Contracting has been a one of the foundation stone in the development renaissance in Saudi Arabia. Over the years, the company has built a reputable track record for successfully completing a numerous project in public and private sectors.

Main three divisions and expertise in

- **Civil Contracting**
- **Rental Services**
- **Marine Works**

Inmaa Al Bilad Company for Contracting is a dynamic company focused on providing engineering solutions which meet client's needs in many Civil works related to roads, sewage projects, floods, electricity and communications networks, and specializes in marine and wave equipment.

The services include all aspects of marine operation which cover quite a diversified range of activities in the contracting field.

Inmaa Al Bilad Co. offers the complete turnkey package, supply, installation and service of the equipment.

We adopt a policy based on the concept of total quality in the completion of projects. We express our creativity, team-work, belief in sustainability and global nature within an organizational structure that allows people the freedom and flexibility to use their skills to their fullest potential.



The company is proud of its team of experienced engineers in the fields of engineering and technical management, and everyone works in accordance with consistency and harmony. Inmaa Al Bilad Company have an excellent team of highly motivated and skilled workforce led by highly qualified professionals who can cope with any peak work schedules in an efficient and competitive manner.

VISION

We strive to spread our economic and social mission at the level of the Kingdom of Saudi Arabia by planting the values of total quality in our field and giving the ideal model for it.

MISSION

Working in a steady and renewed pace to achieve our long-term vision to become the leading Saudi company in the field of construction, especially with regard to Marine sector.



GOALS

- Serve Customer according to the highest quality standards.
- To achieve and maintain the optimum customer satisfaction.
- Follow up with the latest updates in the field and transfer it to the Kingdom.
- Continuous training for the company's teams.
- Encouraging research and self-training for technicians and workers.
- Expand our branches to all regions of the Kingdom

VALUE

Clarity and Transparency: We deal with values of integrity with all customers and partners, and according to the regulations and laws adopted in the Kingdom

Seriousness in Work: We deal with the seriousness and care to broadcast this value in the human frameworks within our company

Commitment to contracts: We are committed to our contracts with customers, and do our best to accomplish our services in accordance with agreed terms



By virtue of total commitment to deliver projects on-time without compromising quality and reliability, Inmaa Al Bilad Contracting Company has established itself as the winner.

The management systems, practices, products, suppliers, customers and employees are measured in terms of performance. Inmaa Al Bilad Contracting Company will aggressively strive to ensure that customer satisfaction is achieved at all times, and in all services. All the employees of Inmaa Al Bilad Contracting Company are committed to this Quality Policy that is reviewed for performance annually.

Inmaa Al Bilad Contracting Company shall empower its team to implement Quality Management System through the following actions points:

- Clearly understand customer needs and provide products and service as per their needs.
- Integrate que management principles into core business processes and decision-making practices for establishing and reviewing quality objectives on a continuous basis.
- Continually improve the effectiveness of established Quality Management System
- Encourage our team members through training and recognition process
- Increase overall business performance without compromising products and service quality
- Quality Policy is displayed and communicated to all employees of the company
- Quality Policy is periodically reviewed for its continuing suitability
- Comply with the relevant regulatory requirements governing our business.



Health & Safety Environmental' Standards which Inmaa Al Bilad Contracting Company strictly follows to provide the necessary support and ensures effective implementation of Integrated Health, Safety, Environmental policies and procedures in its daily operation. The goal is to protect its people, the public, property and the environment in which Inmaa Al Bilad Contracting Company work and live.

INMAA ALBILAD CONTRACTING COMPANY seeks to maintain the best HSE practices in all workplaces according to the international standards, codes and local regulations by adopting and applying an HSE Management System in all its managerial levels and by providing the best available tools and equipment. Inmaa Al Bilad Contracting Company continuously evaluate the Health, Safety and Environment (HSE) aspects of equipment and services and are committed to the integration of HSE objectives into the management systems at all levels. This will enhance Inmaa Al Bilad Contracting Company success by reducing risk and adding value to the services.

Emphasis will be focused on human health, operational safety, environmental protection, quality improvement and community goodwill.

To accomplish the policy, Inmaa Al Bilad Contracting Company are committed to:

- Protect the health and safety of our people always.
- Identify and eliminate waste, minimize quality non-conformances and environmental, health and safety incidents
- Plan, respond and recover from any emergency, crisis or disruptions.
- Minimize the impact on the environment through pollution prevention, reduction of our natural resource consumption and emissions
- Adhere to all applicable legal, statutory and other
- Reduction and recycling of waste materials.
- Review this policy regularly to ensure ongoing suitability.



INMAA

DIVISIONS & SERVICES

Inmaa Al Bilad Company for Contracting as a specialized construction company provides its extensive experience and range of value-added services under two main departments:



Civil Works



Marine Works



Equipment Rental

INMAA CIVIL WORKS DIVISION



Inmaa Al Bilad Company for Contracting undertakes projects of civil works on turnkey basis and has the ability and reputation to complete the projects on or before projects deadlines, which leads Inmaa Al Bilad Company for Contracting to have a very High rate of Customers Satisfaction. The integrated engineering solutions along with the expertise have enabled Inmaa Al Bilad Company for Contracting to take on some of the major projects.

The company have developed and executed cost-effective projects without compromising on quality, schedule or design. The success of the company is the result of a diversely skilled staff supported by highly experienced management. Inmaa Al Bilad Company for Contracting are committed to all the principles and practices of occupational safety in accordance with the local regulations and international standards. The services of the civil works department include:

Our expertise in civil works

1. Storm Water Projects including Groted Rip Rap woks
2. Urban planning works
3. Road Works (Excavation, Filling and Asphaltting)
4. Water, Sewage and storm water drainage projects
5. Telephone, Electrical and Fiber Optic cables projects including trenching
6. Cut and Fill projects, building foundations excavations including shoring and dewatering works
7. Reinforcement Concrete works for Storm water channels
8. Foundation Reinforcement Concrete works



The company has gained extensive experience in the field of marine development projects. All technicians are trained and available on call to attend service requests offshore or on site. The Marine department of Inmaa Al Bilad Company for Contracting has a reliable fleet of vessels to provide an assortment of Marine Services in order to support the exploration, production and transportation of oil. Inmaa Al Bilad Company for Contracting have achieved many achievements in this Field and gained a good reputation among all customers, our services in this department range from:

Coastal Development

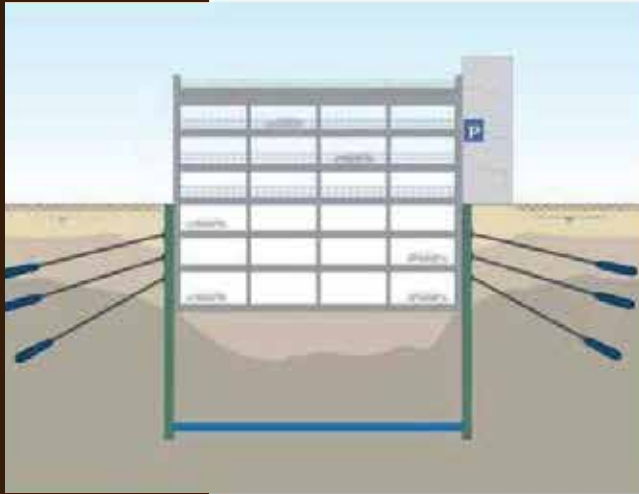
- Breakwaters Construction.
- Revetment and Shore Protection.
- Coastal Development Projects.

Rescue Operations include

- Removal of Shipwreck.
- Environmental Care.



Excavation Pit



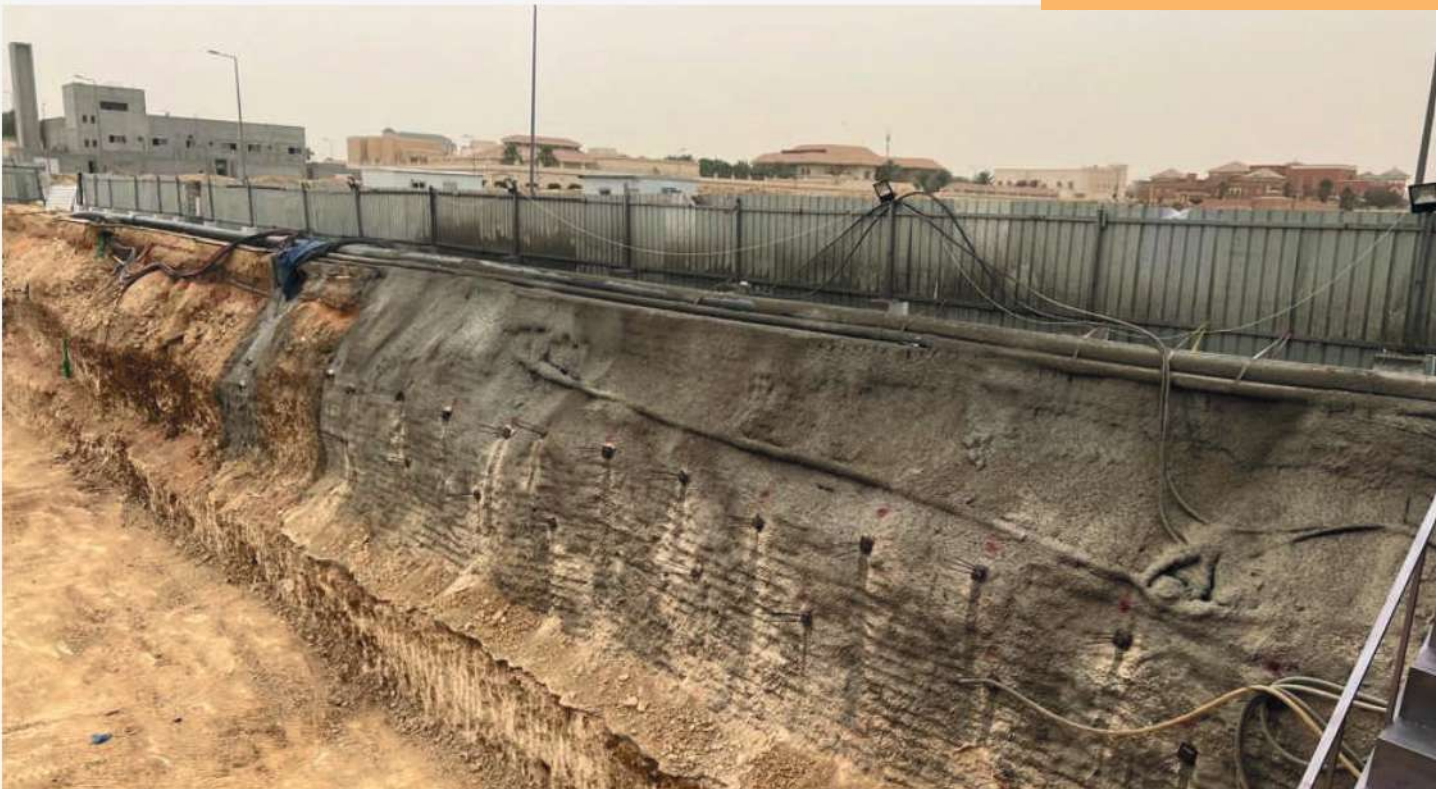
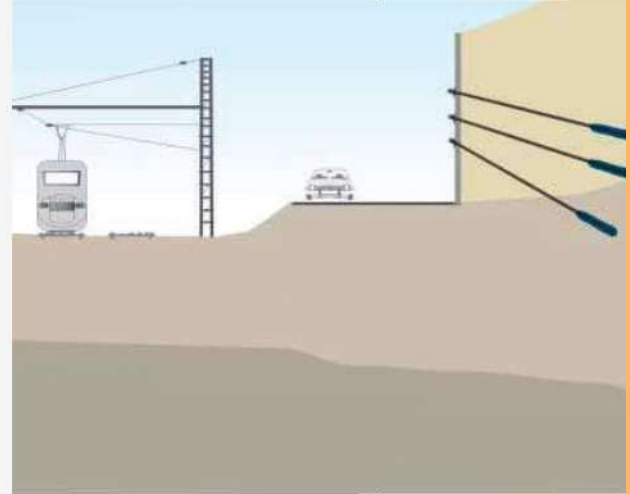
Foundation anchors are used when there is not enough space so that sloped excavation cannot be carried out, by creating a retaining structure capable of absorbing impacts from earth pressure to prevent the excavation soil from returning to the hole and thus providing safety for workers and neighboring facilities from falling and collapsing.



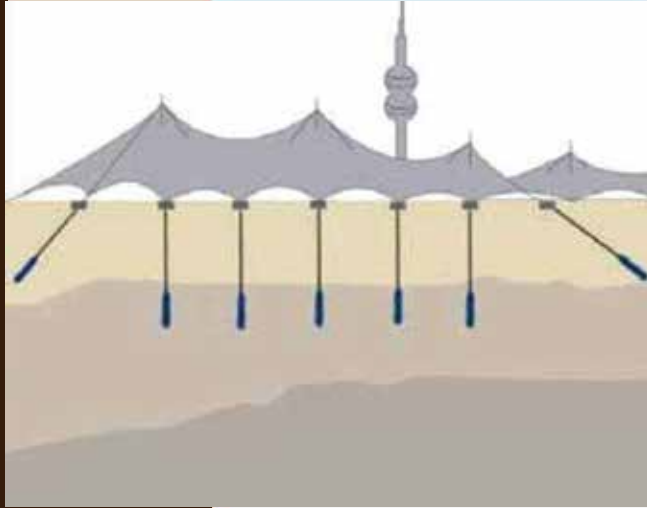
شركة إنماء البلاد للمقاولات
INMAA ALBILAD CONTRACTING CO.

Slope Stabilization

When choosing to build over mountains or spaces along slopes, it becomes necessary to limit the natural slope of the area by installing a retaining structure attached to permanent anchors to secure the slopes and maintain safety.



Foundation Tie Back



Building loads are usually applied to the construction soil to reinforce the foundations, but in the case of suspension bridges, for example, this is replaced by tying-back the foundations to supporting piles in order to release the tensile forces so that these piles become an essential part of the building structure.



شركة إنماء البلاد للمقاولات
INMAA ALBILAD CONTRACTING CO.

Our Project

Ibn Al-Haytham Street station project -Riyadh - Al Nahda District



Our Project

Residential building project site - Riyadh - Rabwah



Our Project

Ali Hayas Al-Zahrani Hotel project site-Riyadh -Jeddah-Makkah Highway



Our Project

The Bank Albilad branch project site- Riyadh, Al-Wurud District,
King Abdullah Road



Our Project

Al-Inmaa Bank project site-Jeddah, Hira Street, opposite the Danube



Our Project

The Rukm Real Estate Development Company project site-Riyadh
- Al-Nahda district



Our Project

Al-Khair Arabia Company project site-Riyadh, Olaya Street, north



Our Project

The Engineering Solutions Company project site-Riyadh, Al-Nakhil Distri



Our Project

Suleiman Habib project site-King Abdullah Road



Our Project

Al-Majal Al-Arabi project site-Riyadh, Al-Waha district



Our Project

The Ramla Hospital site-Riyadh, King Abdulaziz Road



Our Project

The nurses' housing project, Al-Habib Hospital-Riyadh, Al-Takhasosi Street



Private Marine Works include

- Quay walls and Jetties.
- Wooden Platforms and floating docks.
- Walkways.



Shore protection and Revetment Works

General Marine Works include

- Underwater welding and cutting of piles and pipes.
- Navigation lights installation.
- Shark nets.
- Artificial Lakes.
- Survey works.
- Logistics Works.



Other works include

- Survey works.
- Logistics Works.



Completed Projects

PROJECT NAME	SITE	OWNER	VALUE (SAR)	START	END
CONSTRUCTION OF 2 BERTHS, DUBA PORT	DUBA	SEAPORT AUTHORITY	7,858,875	31 JAN, 2012	16 FEB, 2014
CONSTRUCTION OF BERTHS TO FISHING BOATS, JIZAN	JIZAN	MINISTRY OF AGRICULTURE	102,154,207	8 MAY, 2011	4 MAY, 2014
LIFTING OF SUBMERGED BOAT & BARGE, JAZAN	JIZAN	MINISTRY OF AGRICULTURE	7,232,772	13 MAY, 2014	13 JAN, 2014
RENOVATION AND REFURBISHMENT OF EXISTING BERTHS	FARASAN	SEAPORT AUTHORITY	15,056,679	14 JAN, 2014	30 APR, 2015
CONSTRUCTION OF BERTH 11 FOR GENERAL CARGO & YARDS IN YANBU COMMERCIAL PORT	YANBU COM-MERCIAL PORT	SEAPORT AUTHORITY	159,400,000	24 JUN, 2013	3 JUN, 2015
REHABILITATION OF BERTHS AT KING FAHD INDUSTRIAL PORT, JUBAIL	JUBAIL	KING FAHD IND'L. PORT	57,496,954	22 APR, 2014	27 JUL, 2016
CONSTRUCTION OF BERTH TO FISHING BOATS AL ABBASI IN YANBU	YANBU	SEAPORT AUTHORITY	5,160,000	2 FEB, 2015	10 AUG, 2016
CONSTRUCTION OF TWO BERTHS MADAYA & FARASAN IN JAZAN	JIZAN	MINISTRY OF AGRICULTURE	56,800,000	20 NOV, 2013	22 JAN, 2017
DEVELOPMENT OF COMICH AND WATERFRONT OF JEDDAH PHASE 4 & 5	JEDDAH	JEDDAH MUNICIPALITY	796,984,811	22 MAR, 2015	24 OCT, 2018

PROJECT NAME	SITE	OWNER	VALUE (SAR)	START	END
RENOVATION OF MARINE & SERVICE BERTHS	YANBU	YANBU INDUSTRIAL PORT	9,813,019	24 APR, 2004	12 APR, 2005
RENOVATION OF VESSEL MAINTENANCE DOCK – KING ABDUL AZIZ PORT IN DAMMAM	DAMMAM	SEAPORT AUTHORITY	3,750,000	7 AUG, 2005	28 AUG, 2005
RENOVATION OF DOCKS 21 & 22 & SERVICE	YANBU	YANBU INDUSTRIAL PORT	19,450,000	4 JUL, 2004	15 DEC, 2005
MAINTENANCE OF 4 MOORINGS GOLPHINS JEDDAH ISLAMIC PORT	JIZAN	SEAPORT AUTHORITY	1,260,000	26 JAN, 2006	13 MAR, 2009
RENOVATION OF WAVE BARRIERS & ADJACENT	JIZAN	SEAPORT AUTHORITY	82,336,370	15 NOV, 2008	29 AUG, 2010
LIFTING AND RE-ASSEMBLING OF ANTIQUE BOAT PHASE 1	QUNFUZA	MINISTRY OF AGRICULTURE	2,950,000	3 MAY, 2011	2 SEP, 2011
FISHING HARBOR AT AL QUNFUZA	QUNFUZA	MINISTRY OF AGRICULTURE	85,801,589	13 OCT, 2009	30 MAY, 2012
LIFTING AND RE-ASSEMBLING OF ANTIQUE BOAT PHASE 2	QUNFUZA	MINISTRY OF AGRICULTURE	945,000	8 OCT, 2012	19 AGO, 2012
ROCK PROTECTION TO THE CONTROL TOWER, JIZAN PORT	JIZAN	SEAPORT AUTHORITY	1,367,400	21 JAN, 2012	19 AGO 2012
TREATMENT & RESTORATION OF THE COASTAL ENVIRONMENT, 6 MUSALAMIAH	EASTER REGION	PME	33,443,610	23 NOV, 2011	11 NOV, 2012
RENOVATION OF JIZAN PORT BERTH, JAZAN	JIZAN	AL-NAWA T.S. CO. LTD.	8,179,500	2 JUL, 2012	4 DEC, 2012
MAINTENANCE OF THE BUOYS HALF MOON BEACH	EAST QATIF	QATIF MUNICIPALITY	1,500,000	23 NOV, 2011	11 NOV, 2012
TAROOT CHANNEL DEEPENING PHASE II	QUATIF	QUATIF MUNICIPALITY	7,858,875	5 OCT, 2011	22 FEB, 2013
TREATMENT & RESTORATIONS OF THE COASTAL ENVIRONMENT, MRC 2 DAWHAT BALBOOL (EAST)	EASTERN REGION	PME	57,248,685	17 OCT, 2012	15 APR, 2013
TREATMENT & RESTORATIONS OF THE COASTAL ENVIRONMENT, CRC 17 AL NAQWARIAH (EAST)	EASTERN REGION	PME	9,375,000	17 OCT, 2012	15 APR, 2013



Berth 11

renovation of marine service bearths

Dredging of 1,500,000m³ (-14.0 m for Turning Basin & -22.00 m under the quay wall). Construction of 410 LM quay wall (from -17.0 m to +3.0m) Casting and placing of 52,000m³ concrete blocks (119 -150 Tons each) Rocks placement 160,000m³ for the trench bed soil replacement, rock fill behind the quay wall and the scouring toe. Reclamation and furnishing of 88,000 m² yard with heavy duty concrete slabs Executing of MEP works. Executing the bathymetric survey using multi-beam echo sounder.



Al Abbasi

Coonstruction of berth to fishing ports

Dredging of 57,000 m³ in the turning basin and the quay wall trench. Construction of 220 lm Quay wall with 2m height. Construction of 140 lm wave break-water. Construction of slipway for boats maintenance and repair Landscape and roads asphaltting. Executing the bathymetric survey using single beam echosounder



Antique boat

lifting and reassemblance

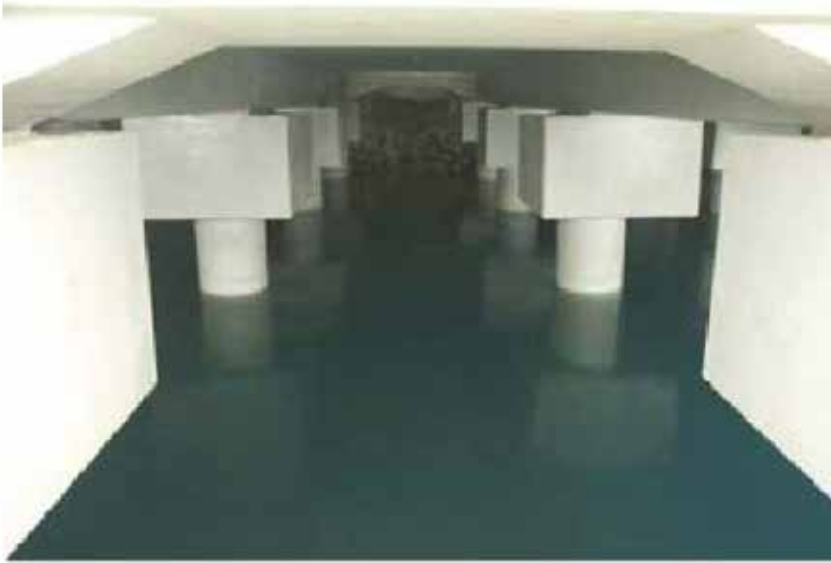
Initial cleaning of the ship of sand, animals and marine plants. Vessel lifted from the seabed. Place vessel in fresh water to prevent further rusting in preparation for the repair process. After assessing the condition of the vessel, sand and other external layers removed usin pressurized air and other methods with the help of metal detecting technology to properly asses the hull. Relocating the vessel and its parts to the designated location.



Jizan Fishing Boats

construction of berth to fishing boats

Dredging of 350,000 m² in the basin and the quay wall trench. Construction of 1260Lm Break-water, 6.0 m depth at Roundhead. Construction of 305m Quay wall with 3m depth. Construction of 3,640 Lm of floating docks 3 meters width. Construction of (2) Slip-ways. Construction of (1) Coast Guard Building with 100 m² total area - 2 floors Landscape, infrastructure works, Concrete Fence, MEP works and 3 Gates. Executing the bathymetric survey using single beam echosounder



Berth 21 & 22

renovation of marine service bearths

MISSING



Madaya & Farasan

construction of two berths

Dredging of 300,000 m³ in the basin and the quay wall trench. Construction of 440 lm breakwater, 5.5 m depth at Roundhead. Construction of 275 lm Quay wall with 3m depth. Construction of 1000 lm of floating docks 3m width. Construction of 2 Coast Guard buildings with 100 m² total area - 2 floors. Landscape, Concrete Fence, MEP works and 3 Gates. Executing the bathymetric survey using single beam echosounder.



Treatment & restoration of the coastal environment Musalamiya

Coastal Remediation includes
Removal of 9,158 m² Asphalt
pavement De-compaction of
32,637 m², and 169,971 m² of
Physical tilling. Excavation of tidal
channels 8,572 LM, and planting
of halophytes (mangroves) along
the perimeter 7,672 pcs.



Nuqariya

treatment & restoration
of the coastal environment

MISSING



Jizan Tower

construction of control tower

The scope was to execute the slope protection and Riprap works for 300 LM. Rehabilitation of the existing caisson including under water concrete mortar injection, rock backfilling & heavy dutycover slabs.



Jeddah Cornich Development of Cornich & Waterfront of Jeddah Phase 4 & 5

Development of 720,281 m² of Jeddah North Cornich. The project scope is to construct of 4,850 LM quay wall (2.5 -3.0 m H) including shoring & de-watering works. Construction of fishing pier (125LM, 2450m², 6 pavilion and 15 shades) including pile works and WPC decking, the approximate capacity is 814 people.



Construction of Berths For Fishing Boats

Jizan Port

Dredging of 350,000 m² in the basin and the quay wall trench. Construction of 1260Lm Breakwater, 6.0 m depth at Roundhead. Construction of 305m Quay wall with 3m depth. Construction of 3,640 Lm of floating docks 3 meters width. Construction of (2) Slip-ways. Construction of (1) Coast Guard building with 100 m² total area – 2 floors. Landscape, infrastructure works, Concrete Fence, MEP works and 3 Gates. Executing the bathymetric survey using single beam echosounder



Deepening Phase II in Qatif Taroot Channel

Dredging of 25,000m³ along the channel (350 LM) in order to deepening the Taroot Channel. Construction of 1,000Lm of slope protection and breakwater. Construction of 700LM culverts. Full drainage system including 6 inspection manholes. Executing the bathymetric survey using multi-beam echosounder



Construction Of Berths To Fishing Boats Al Khobar

Dredging of 100,000 m³ in basin and quay wall trench. Construction of 130 m Breakwater, 5.0 m depth at Roundhead. Construction of 125 m Quay wall with 3 m depth. Construction of 500 LM of floating docks with a width of 3 meters. Construction of coast guard building with 100 m² total area - 2 floors. Landscape, Concrete Fence, and 3 Gates. Executing the bathymetric survey using single beam echosounder



Salvaging of Vessel Maintenance in Damman

Dock-King Abdul Aziz Port

Determination of the structural and watertight conditions of the dry-dock and to ascertain the status of dry-dock systems, a detailed engineering analysis and a Salvage Plan involving extensive preparatory work both topside and underwater. Maintenance for both the hull and the submerged top deck including underwater welding and full inspection. The floating process has been executed by using a sufficient number of high-capacity electric salvage pumps. Additionally, numerous gauging systems were established to monitor tank pressures and condition throughout the refloating operation.



Rehabilitation of Various Berths Phase I Jeddah Islamic Port

Maintenance and rehabilitation of 8 berths (approx. 2,800 LM) including demolition and reconstructing the concrete fascia and installing the embedded cathodic protection. Capping beam accessories replacement including arch rubber fenders, bollards and mooring rings.



Construction Of Berths To Fishing Boats Al Khobar

Dredging of 100,000 m³ in basin and quay wall trench. Construction of 130 m Breakwater, 5.0 m depth at Roundhead. Construction of 125 m Quay wall with 3 m depth. Construction of 500 LM of floating docks with a width of 3 meters. Construction of coast guard building with 100 m² total area - 2 floors. Landscape, Concrete Fence, and 3 Gates. Executing the bathymetric survey using single beam echosounder



Rehabilitation Of Berths Jubail King Fahd Industrial Port

Rehabilitation of various existing berths is including the fascia renovation and replacement of capping beam accessories (various types of rubber fender and wooden fenders). Steel pile jacketing including the installation of zinc wire mesh and bulk anodes 65 Kgs and 150 Kgs.



Rehabilitation Of Syncrolift Yanbu

Maintenance of the Syncrolift including the lifting deck (the beams and the slab). Rehabilitation of concrete fascia along the piers including the renovation of the pile caps.



Construction Of Two Berths **Madaya & Farasan**

Dredging of 300,000 m³ in the basin and the quay wall trench. Construction of 440 lm breakwater, 5.5 m depth at Roundhead. Construction of 275 lm Quay wall with 3m depth. Construction of 1000 lm of floating docks 3m width. Construction of 2 Coast Guard buildings with 100 m² total area - 2 floors. Landscape, Concrete Fence, MEP works and 3 Gates. Executing the bathymetric survey using single beam echosounder

Deepening Phase II in Qatif

Taroot Channel

Dredging of 25,000m³ along the channel (350 LM) in order to deepening the Taroot Channel. Construction of 1,000LM of slope protection and breakwater. Construction of 700LM culverts. Full drainage system including 6 inspection manholes. Executing the bathymetric survey using multi-beam echosounder



Construction Of Two Berths Dubai Port

Construction of two quay walls (Ferries and coast guard berths) 160 LM length, 6.0 m depth. The blocks weight are between (38-55Tons). Construction of berth yard (16,200m²) including reclamation and concrete asphaltting. Infrastructure works (MEP works and electrical works).



Construction Of Fishing Boats Umlaj, Tabuk

Dredging of 65,000 m³ in the basin and quay wall trenches. Construction of 310m Breakwater (45,000m³) and 70m floating breakwater, 8.0m depth at Roundhead. Construction of 100m Quay wall with 3 m depth. Construction of 500LM of floating docks with a width of 3 meters. Construction of 1 Coast Guard buildings with 100 m² total area - 2 floors. Landscape, infrastructure works. Concrete Fence, and 3 Gates. Executing the bathymetric survey using single beam echosounder

Ongoing Projects

PROJECT NAME	SITE	OWNER	VALUE (SAR)	START	END
REHABILITATION OF VARIOUS BERTHS	TABUK	COASTAL GUARD MOI	15,554,846	1 JUL, 2015	27 JUN, 2019
CONSTRUCTION OF FISHING HARBOR AT UMLUJ	TABUK	MINISTRY OF AGRICULTURE	19,600,000	1 JUN, 2015	27 JUL, 2019
REHABILITATION OF BERTHS AT KING FAHD INDUSTRIAL PORT (PHASE II)	JUBAIL	KING FAHD IND'L PORT	7,874,900	9 JUL, 2017	20 MAI, 2019
CONSTRUCTION OF BOATS LIFTING PIER AL-DOMIGHA	AL-DOMIGHA	COAST GUARD MOI	15,482,000	10 JUL, 2017	1 MAR, 2019
TREATMENT & RESTORATION OF THE COASTAL ENVIRONMENT - CRC19	EASTERN REGION	PME	39,786,530	26 JUL, 2017	26 JAN, 2020
TREATMENT & RESTORATION OF THE COASTAL ENVIRONMENT - CRC20	EASTER REGION	PME	46,196,800	26 JUL, 2017	26 JAN, 2020
CONSTRUCTION OF AL-LAITH FISHERY HARBOR - MEKKAH PROVINCE	AL-LAITH	MINISTRY OF AGRICULTURE	56,776,278	20 NOV, 2017	4 JUL, 2019



Construction Of Berths Al Khobar Fishing Boats

Dredging of 100,000 m³ in basin and quay wall trench. Construction of 130 m Breakwater, 5.0 m depth at Roundhead. Construction of 125 m Quay wall with 3 m depth. Construction of 500 LM of floating docks with a width of 3 meters. Construction of coast guard building with 100 m² total area - 2 floors. Landscape, Concrete Fence, and 3 Gates. Executing the bathymetric survey using single beam echosounder



Construction Of Fishing Boats Umlaj, Tabuk

Dredging of 65,000 m³ in the basin and quay wall trench. Construction of 310m Breakwater (45,000m³) and 70m floating breakwater, 8.0m depth at Round-head. Construction of 100m Quay wall with 3 m depth Construction of 500LM of floating docks with a width of 3 meters. Construction of 1 Coast Guard buildings with 100 m² total area - 2 floors. Landscape, infrastructure works, Concrete Fence, and 3 Gates. Executing the bathymetric survey using single beam echosounder



Inmaa Al Bilad Company for Contracting is a full-service equipment rental providing customers the equipment, services and solutions they need to achieve optimal performance safely, efficiently and effectively. Inmaa Al Bilad Company for Contracting possess some of the specially costumed equipment such as long boom excavators, clamshells, drum cutter excavators and mobile crushers that enables us to accomplish more complicated projects and be involved in bigger projects with various requirements

OUR FLEET OF EQUIPMENTS

- Excavator
- Mobile crusher (jaw)
- Mobile crusher (impact)
- Mobile screen
- Excavator erkat
- Drum cutter excavator
- BULLDOZER
- Wheel loader
- Motor grader
- Excavator long boom
- Grabber Excavator
- Mini loader
- Roller wheels
- Asphalt roller
- Mobile crane
- Trucks (16 m3)
- Dump Trailer
- Backhoe
- Flatbed Trailer
- Low Bed Trailer
- Fuel Tanker
- Water Tanker
- Passenger Bus
- Jeep and Pickups



Clients We deal With





إِنَّمَا أَلْبِلَادُ
INMAA ALBILAD

Valuable Clients

سابك
SABIC

中國石化
SINOPEC

HYUNDAI
ENGINEERING CO. LTD.

aramco



HEC

صدارة
Sadara

SAIPEM

الشركة السعودية للكهرباء
Saudi Electricity Company



شركة إنهاء البلاد للمقاولات
INMAA ALBILAD CONTRACTING CO.

P.O.Box 6686, Makkah Road,
Al Sulaimaniyah Dist., Riyadh 12231, Kingdom of Saudi Arabia
Prince Mohammad Bin Fahd Rd., Al-Shatea Dist. Dammam

Contact: +966 50 702 2333 - +966 11 410 2416

Email: info@inmaaalbilad.com

Web: www.inmaaalbilad.com